



Digital TV Chipset
Smart / Convergence Chipset
Mobile TV / DAB / MP3



ARABIC & THAI DISPLAY

C contents

1. Specification
2. Demo Environment
3. Demo
4. Q&A

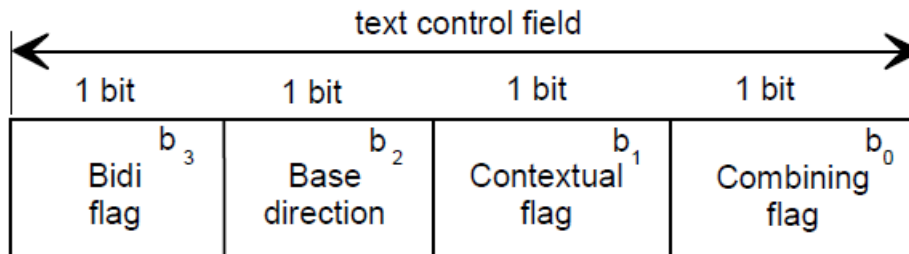


1. Specification Changes

- A new version has been published that corresponds to the standard below.
 - ✓ **ETSI TS 103 176 V2.4.1 (2020-08) : Rules of implementation;**
 - ✓ **ETSI TS 101 756 V2.4.1 (2020-08) : Registered Tables;**
 - ✓ ETSI TS 103 461 V1.2.1 (2020-08) : Minimum requirements and test specifications for technologies and products.
- **Summary of changes**
 - ✓ **Non-latin Text support**
 - ✓ Service following, The same ECC is added to the same service ID in the same service condition.
 - ✓ ALARM announcement is included as a basic test item for TickMark.
 - ✓ SPI(service and programm information) has become mandatory for color LCD-based products
 - ✓ TickMark stream has been updated to V1.2
 - ✓ Redefine the DAB receiver profile.

1.1. Non-Latin text support

- ✓ Regional profiles are defined to for non-Latin text.
 - ✓ The text control field is designed to convey information to receivers about the necessary rendering capabilities needed for proper display of the label



Bidi flag: this 1-bit flag shall indicate whether the label contains bidirectional text (excluding numerals) as follows:

- 0: bidirectional text is not present;
- 1: bidirectional text is present.

Base direction: this 1-bit flag shall define the Unicode base direction of the label as follows:

- 0: left-to-right (LTR);
- 1: right-to-left (RTL).

Contextual flag: this 1-bit flag shall indicate whether contextual characters are used in the label as follows:

- 0: contextual characters are not present (presentation characters only);
- 1: contextual characters are present.

Combining flag: this 1-bit flag shall indicate whether combining characters are used in the label as follows:

- 0: combining characters are not present;
- 1: combining characters are present.

1.2. Regional Profile definitions

- ✓ The definitions of the profiles define which SI labels are allowed as follows.
 - ✓ **Base:** service components shall be given a FIG type 1 SI label **only**;
 - ✓ **Either:** service components shall be given **either** a FIG type 1 SI label **or** a FIG type 2 SI label but **not both**;
 - ✓ **Both:** service components shall be given both a FIG type 1 SI label and a FIG type 2 SI label.
- ✓ Regional profile definitions.

Profile	SI label options (see clause E.2)	FIG type 2 text control field settings	Dynamic label charset settings	Dynamic label text control field settings	Glyph set
EBU Latin	Base	-	EBU	0000b	Complete EBU Latin-based repertoire (see annex C)
All Europe	Either	0000b	EBU UTF-16 UTF-8	0000b	Complete EBU Latin-based repertoire (see annex C) U+0384 to U+03CE (Greek) U+0400 to U+045F (Cyrillic) (see also annex F)
Arab States Broadcasting Union	Either	0100b	EBU UTF-16 UTF-8	xx00b	Complete EBU Latin-based repertoire (see annex C) U+060C (Arabic comma), U+061B (Arabic semi-colon), U+061F (Arabic question mark) U+0660 to U+066C (Arabic-Indic numerals and numerical punctuation) U+06F0 to U+06F9 (Eastern Arabic-Indic numerals) U+FE70 to U+FEFF (Arabic Presentation Forms-B)
Thai	Either	00xxb	EBU UTF-16 UTF-8	00xxb	Complete EBU Latin-based repertoire (see annex C) U+0E00 to U+0E7F (Thai)

NOTE 1: FIG type 1 labels can only use the EBU charset.

NOTE 2: FIG type 2 labels and dynamic labels with charsets UTF-8 and UTF-16 can use all permitted codepoints unless the text control field settings preclude it (e.g. character type L codepoints in an RTL label).

NOTE 3: An 'x' in the text control field settings indicates that either 0 or 1 may be used.

NOTE 4: Ensemble labels are optional; if provided they may be coded as FIG type 1 and/or FIG type 2.

1.2.1 EBU-Latin Profile

✓ EBU Latin profile

- ✓ Since EBU latin only uses FIG type1, only DLS is considered for the text control field.

FIG type 2				Dynamic Label			
Text control field				Text control field			
1 bit	1 bit	1 bit	1 bit	1 bit	1 bit	1 bit	1 bit
Bidi flag	Base direction	Contextual flag	Combining flag	Bidi flag	Base direction	Contextual flag	Combining flag
-	-	-	-	0	0	0	0

- ✓ It is based on Complete EBU Latin-based repertoire and is the default profile of DAB.

Character code (hexadecimal)															
-0	-1	-2	-3	-4	-5	-6	-7	-8	-9	-A	-B	-C	-D	-E	-F
0-	0118	012E	0172	0102	0116	010E	0218	021A	010A	0120	0139	017B	0143		
	È	Ì	Ù	À	É	Ð	Š	Ť	Č	Ġ	Ĺ	Ž	Ń		
1-	0105	0119	012F	0173	0103	0117	010F	0219	021B	010B	0147	011A	0121	013A	017C
	ą	ę	ı	ų	â	ê	đ	š	ť	č	Ń	Ę	ğ	ı	ź
2-	0020	0021	0022	0023	0142	0025	0026	0027	0028	0029	002A	002B	002C	002D	002E
	!	"	#	ł	%	&	'	()	*	+	,	-	.	/
3-	0030	0031	0032	0033	0034	0035	0036	0037	0038	0039	003A	003B	003C	003D	003E
	0	1	2	3	4	5	6	7	8	9	:	;	<	=	>
4-	0040	0041	0042	0043	0044	0045	0046	0047	0048	0049	004A	004B	004C	004D	004E
	@	A	B	C	D	E	F	G	H	I	J	K	L	M	N
5-	0050	0051	0052	0053	0054	0055	0056	0057	0058	0059	005A	005B	016E	005D	0141
	P	Q	R	S	T	U	V	W	X	Y	Z	[Ů]	ł
6-	0104	0061	0062	0063	0064	0065	0066	0067	0068	0069	006A	006B	006C	006D	006E
	À	a	b	c	d	e	f	g	h	i	j	k	l	m	n
7-	0070	0071	0072	0073	0074	0075	0076	0077	0078	0079	007A	00AB	016F	00BB	013D
	p	q	r	s	t	u	v	w	x	y	z	«	ú	»	Ł
8-	00E1	00E0	00E9	00E8	00ED	00EC	00F3	00F2	00FA	00F9	00D1	00C7	015E	00DF	00A1
	á	à	é	è	í	ì	ó	ò	ú	ù	Ń	Ç	Ş	ß	ı
9-	00E2	00E4	00EA	00EB	00EE	00EF	00F4	00F6	00FB	00FC	00F1	00E7	015F	011F	0131
	â	ä	ë	ë	ï	ï	ô	ö	û	ü	ñ	ç	ş	ğ	ı
A-	0136	0145	00A9	0122	011E	011B	0148	0151	0150	20AC	00A3	0024	0100	0112	012A
	K	N	©	Ğ	Ĝ	ê	ñ	ó	ô	€	£	§	À	É	İ
B-	0137	0146	0138	0123	013C	0130	0144	0171	0170	00BF	013E	00B0	0101	0113	012B
	k	ŋ	Ł	ğ	ı	ı	ñ	ú	Û	¿	ı	°	ä	ë	ı
C-	00C1	00C0	00C9	00C8	00CD	00CC	00D3	00D2	00DA	00D9	0156	010C	0160	017D	00D0
	À	Á	É	È	İ	İ	Ö	Ö	U	U	Ŕ	Č	Š	Ž	Đ
D-	00C2	00C4	00CA	00CB	00CE	00CF	00D4	00D6	00DB	00DC	0159	010D	0161	017E	0111
	Ā	Ā	Ē	Ē	Ī	Ī	Ō	Ō	Ū	Ū	ŕ	č	š	ž	đ
E-	00C3	00C5	00CB	0152	0177	00DD	00D5	00D8	00DE	014A	0154	0106	015A	0179	0164
	Ā	Ā	Æ	Ĉ	ÿ	Ÿ	Ō	Ø	Ɔ	Đ	Ŕ	Č	Š	Ž	ť
F-	00E3	00E5	00E6	0153	0175	00FD	00F5	00F8	00FE	014B	0155	0107	015B	017A	0165
	ā	ā	æ	č	ÿ	ÿ	ø	Ɔ	ø	Ɔ	ŕ	č	š	ž	ť

1.2.2 ALL-European Profile

✓ All European Profile

- ✓ Text control field is used, but only Left to Right display is supported.

FIG type 2				Dynamic Label			
Text control field				Text control field			
1 bit	1 bit	1 bit	1 bit	1 bit	1 bit	1 bit	1 bit
Bidi flag	Base direction	Contextual flag	Combining flag	Bidi flag	Base direction	Contextual flag	Combining flag
0	0	0	0	0	0	0	0

- ✓ In addition to EBU Lain character set, Creek and Cyrillic characters are additionally defined.

	-0	-1	-2	-3	-4	-5	-6	-7	-8	-9	-A	-B	-C	-D	-E	-F
038-					´	¨	À	·	É	Ë	Ì		Ò		Û	Ω
039-	î	Α	Β	Γ	Δ	Ε	Ζ	Η	Θ	Ι	Κ	Λ	Μ	Ν	Ξ	Ο
03A-	Π	Ρ		Σ	Τ	Υ	Φ	Χ	Ψ	Ω	Ï	ÿ	ά	έ	ή	ί
03B-	Û	α	β	γ	δ	ε	ζ	η	θ	ι	κ	λ	μ	ν	ξ	ο
03C-	π	ρ	ς	σ	τ	υ	φ	χ	ψ	ω	ï	ÿ	ό	ύ	ώ	
040-	È	Ě	Ђ	Г	Є	Ѕ	І	Ї	Ј	Љ	Њ	Ћ	Ќ	Ў	Ѓ	Ц
041-	А	Б	В	Г	Д	Е	Ж	З	И	Й	К	Л	М	Н	О	П
042-	Р	С	Т	У	Ф	Х	Ц	Ч	Ш	Щ	Ъ	Ы	Ь	Э	Ю	Я
043-	а	б	в	г	д	е	ж	з	и	й	к	л	м	н	о	п
044-	р	с	т	у	ф	х	ц	ч	ш	щ	ъ	ы	ь	э	ю	я
045-	è	ě	ђ	ѓ	є	ѕ	і	ї	ј	љ	њ	ћ	ќ	ў	џ	џ

1.2.3. ASBU Profile

✓ Arab States Broadcasting Union profile

- ✓ **Receivers shall provide either the Minimum RTL implementation, or the Unicode bidirectional algorithm.**
- ✓ It is recommended that receivers that implement the minimum RTL implementation also implement the simplified bidirectional algorithm.
- ✓ The FIG type 2 labels will set the base direction flag to 1 (RTL) and all other flags to 0.

FIG type 2				Dynamic Label			
Text control field				Text control field			
1 bit	1 bit	1 bit	1 bit	1 bit	1 bit	1 bit	1 bit
Bidi flag	Base direction	Contextual flag	Combining flag	Bidi flag	Base direction	Contextual flag	Combining flag
0	1	0	0	0/1	0/1	0	0

- ✓ Arabic Presentation Forms-B is used as a code point.

	-0	-1	-2	-3	-4	-5	-6	-7	-8	-9	-A	-B	-C	-D	-E	-F
060-																
061-												:				?
066-	٠	١	٢	٣	٤	٥	٦	٧	٨	٩	%	,	,			
06F-	٠	١	٢	٣	٤	٥	٦	٧	٨	٩						
FE7-	٠	١	٢	٣	٤	٥	٦	٧	٨	٩	٠	١	٢	٣	٤	٥
FE8-	٠	١	٢	٣	٤	٥	٦	٧	٨	٩	٠	١	٢	٣	٤	٥
FE9-	٠	١	٢	٣	٤	٥	٦	٧	٨	٩	٠	١	٢	٣	٤	٥
FEA-	٠	١	٢	٣	٤	٥	٦	٧	٨	٩	٠	١	٢	٣	٤	٥
FEB-	٠	١	٢	٣	٤	٥	٦	٧	٨	٩	٠	١	٢	٣	٤	٥
FEC-	٠	١	٢	٣	٤	٥	٦	٧	٨	٩	٠	١	٢	٣	٤	٥
FED-	٠	١	٢	٣	٤	٥	٦	٧	٨	٩	٠	١	٢	٣	٤	٥
FEE-	٠	١	٢	٣	٤	٥	٦	٧	٨	٩	٠	١	٢	٣	٤	٥
FEF-	٠	١	٢	٣	٤	٥	٦	٧	٨	٩	٠	١	٢	٣	٤	٥

1.2.4. Thai Profile

✓ Thai Profile

- ✓ These scripts are **LTR** and so the base direction flag shall be set to 0 and the bidi flag shall be set to 0.
- ✓ Thai characters shall have the **combining flag set to 1**
- ✓ Contextual characters are rare in Thai text, but they do exist.

FIG type 2				Dynamic Label			
Text control field				Text control field			
1 bit	1 bit	1 bit	1 bit	1 bit	1 bit	1 bit	1 bit
Bidi flag	Base direction	Contextual flag	Combining flag	Bidi flag	Base direction	Contextual flag	Combining flag
0	0	0/1	0/1	0	0	0/1	0/1

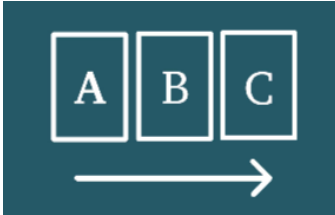
- ✓ Thai code point are lie from U+0E00 to U+0E7F.

	-0	-1	-2	-3	-4	-5	-6	-7	-8	-9	-A	-B	-C	-D	-E	-F
0E0-		ก	ข	ช	ค	ด	ต	ถ	ท	ธ	ช	ซ	ฌ	ญ	ฎ	ฏ
0E1-	ฐ	ฑ	ฒ	ณ	ด	ต	ถ	ท	ธ	น	บ	ป	ผ	ฝ	พ	ฟ
0E2-	ภ	ม	ย	ร	ฤ	ล	ฬ	ว	ศ	ษ	ส	ห	ฬ	อ	ธ	ย
0E3-	ะ	ั	า	ำ	ิ	ี	ึ	ุ	ุ	ู	ุ					๒
0E4-	เ	แ	โ	ใ	ไ	จ	ฉ	็	ั	็	็	็	็	็	็	็
0E5-	อ	ด	ต	ถ	ท	ธ	น	บ	ป	ผ	ฝ	พ	ฟ			
0E6-																
0E7-																

1.3. Display Direction

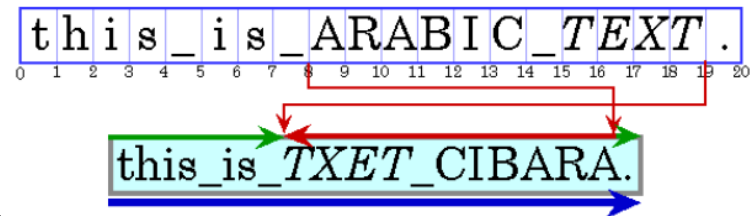
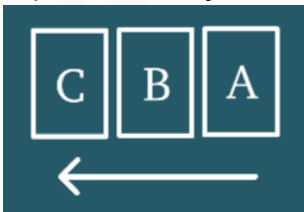
✓ LTR(LEFT-TO-RIGHT)

- ✓ Common languages except Arabic, Hebrew, and Persian.



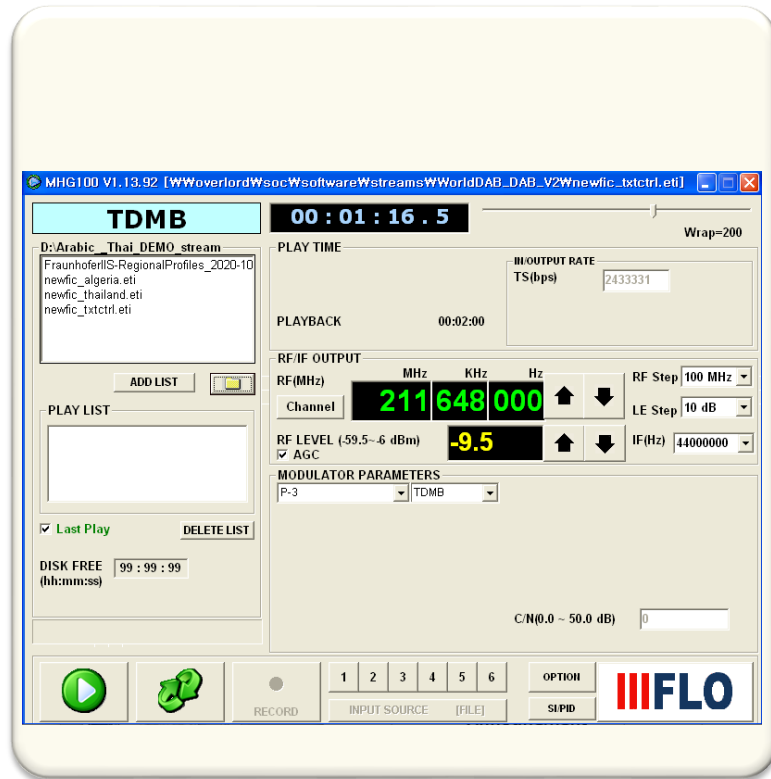
✓ RTL(RIGHT-TO-LEFT)

- ✓ Numeric digits, and their associated characters, are always displayed LTR, even in RTL scripts.
- ✓ Character blocks excluding numeric block must be mirrored by RTL.
- ✓ "123", "4 567", "\$10.99", "66%", "11/03/2018", "15:20", "14€30", "85°F", "٠,٧٨٩", "١٢٣,٤٥٦" are all numeric blocks.
- ✓ Arabic, Hebrew, and Persian languages use RTL notation.
- ✓ In this and subsequent examples, Arabic and Hebrew text is represented by upper case letters and spaces are represented by underscores.



2.1. Demo Environment Description

- ✓ How to receive broadcasts
 - ✓ Play ETI using DAB signal transmission equipment and check if Arabic and Thai are displayed normally on the screen by receiving it with JBL.TUNER2 terminal.



2.2. Restrictions

✓ Display direction

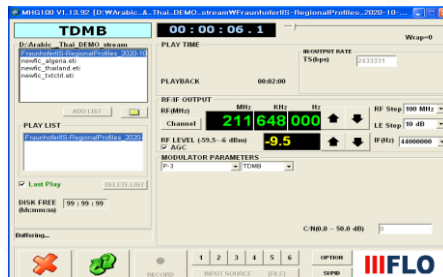
- ✓ The UI of JBL.TUNER2 is processed in the format of [Service Name]-[Programm Type]-[DLS Info] and displayed only in the LEFT-TO-RIGHT direction, and long sentences that are not displayed on one screen are scrolled to the left.
- ✓ In order to support Arabic, the display direction must be considered, and the display direction information is included in the Service Name and DLS Info.
- ✓ Due to screen display restrictions, this DEMO determines the screen display direction based on the display direction included in the Service Name.
 - ✓ When the display direction is "LTR": Display in the form of [Service Name]-[Programm type]-[DLS Info].
 - ✓ When the display direction is "RTL": [DLS Info]-[Programm Type]-[Service Name]
- ✓ That is, if the DLS display direction is not considered, and the display direction of the DLS and the service name is different, there may be confusion.
- ✓ This must be reviewed when setting product UI specifications in the future.

2.3. Demo Order

- All-European Profile reception test.
- Thai Profile reception test
- ASBU Profile reception test

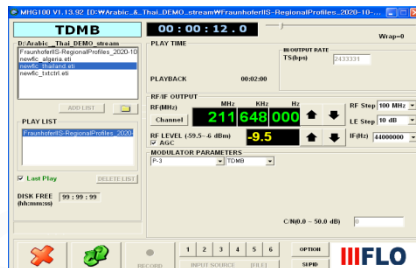
2.4. All-European Profile Reception

- ✓ Stream Information
 - ✓ The test stream was provided by WorldDAB, and the following two are available.
 - ✓ newfic_txtctrl.eti
 - ✓ FraunhoferIIS-RegionalProfiles_2020-10-30.eti
- ✓ Demo Sequence
 - ✓ Send newfic_txtctrl.eti to DAB transmitter.
 - ✓ Search the service with the SCAN button of JBL.TUNER2.
 - ✓ **Select “Αθήνα FM Μοσβα” service and check the displayed.**



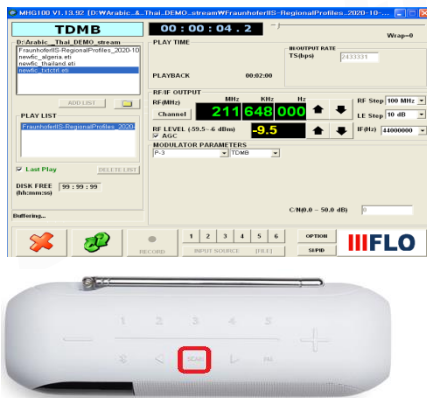
2.5 Thai Profile Reception

- ✓ Stream Information
 - ✓ The test stream was provided by WorldDAB, and the following are available.
 - ✓ newfic_thailand.eti
- ✓ Demo Sequence
 - ✓ Send newfic_thailand.eti to DAB transmitter.
 - ✓ Search the service with the SCAN button of JBL.TUNER2.
 - ✓ Select “เวลาที่มีความสุข” service and check the displayed.



2.5 ASBU Profile Reception

- ✓ Stream Information
 - ✓ The test stream was provided by WorldDAB, and the following three are available.
 - ✓ txtctrl_algeria.eti
 - ✓ newfic_txtctrl.eti
 - ✓ FraunhoferIIS-RegionalProfiles_2020-10-30.eti
- ✓ Demo 순서
 - ✓ Send txtctrl_algeria.eti to DAB transmitter.
 - ✓ Search the service with the SCAN button of JBL.TUNER2.
 - ✓ Select “الإذاعة الثقافية.” service and check the displayed.



2.5 ASBU Profile Reception

- ✓ Arabic Only – RTL display



- ✓ Mixed English and Arabic characters-RTL display

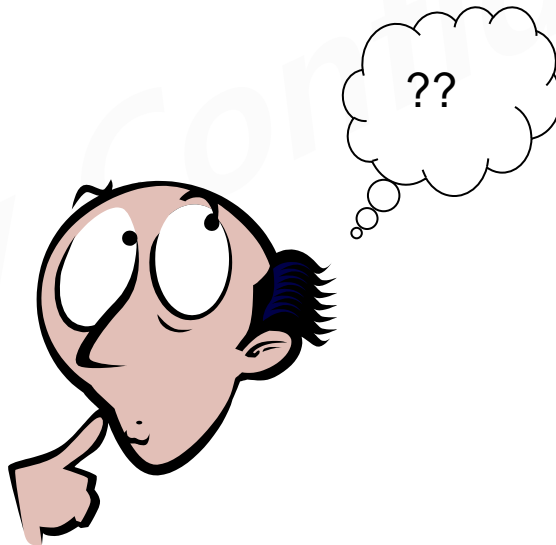


2.5 ASBU Profile Reception

- ✓ Mixed English and Arabic characters-LTR display



Questions



THANK YOU



Forward in advance

